

RAPPA™



LOADING INSTRUCTIONS SERIES 8 BUGGY



COMPONENTS

Before starting, check all the components listed below are present and undamaged. We recommend reading the instructions in full before starting to familiarise yourself with the loading process. The load time is 10 mins.

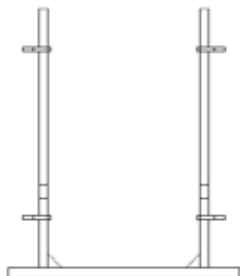
- A. 8x Alloy Hurdle including Long Pins.



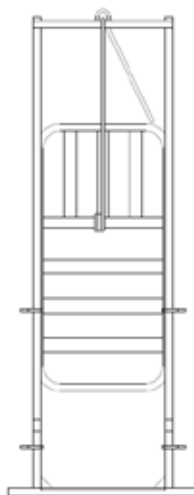
- B. 1x Drop in Gate.



- C. 1x Spreader.



- D. 1x Guillotine Gate.



- E. 1x Panel and Side Gate including Long Pins.



- F. 1x Tall Panel including Long Pins.



LOADING

1. Ensure your built chassis is clear of obstacles.
2. Remove the Lynch pins from the front cross bar of the chassis. Place the base of the Guillotine gate (D) onto this bar. The vertical rods fixed to the cross bar will match with the holes in the base of the Guillotine gate. Fix with a Lynch pin.
3. Place the Panel with side gate (E) against the vertical upright. Ensure the gate on the Panel is nearest the Guillotine gate. Match the lugs on the panel to the 5 hole plate of the Guillotine gate. Secure using a long pin.



4. Load the hurdles onto the chassis. For ease keep the hurdles in pairs.



6. Attach the Spreader (C) to the rear of the Buggy. Match the 5 hole plate on the Spreader to the Lugs on the Panel. Secure using a long pin.



7. Using the 1.1m webbing strap, located on the upright, secure the hurdles.

5. Place the Tall Panel (F) onto the chassis. Match the lugs on the panel to the 5 hole plate of the Guillotine gate. Secure using a long pin.



8. Using the 2.5m webbing strap, attached to the chassis ring. Loop the strap over all the hurdles and hook to the chassis ring on the opposite side, then tighten.



Your buggy is now ready.

TERMINOLOGY

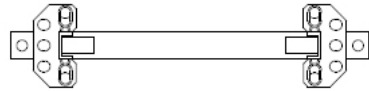
LUGS

The small metal circles on the side of a hurdle or panel.



5 HOLE PLATE

These are used to attach hurdles or panels using long pins.



TWO WAY COUPLING

These are used to join two Lugs together. This can often occur when forming a pen



COUPLING

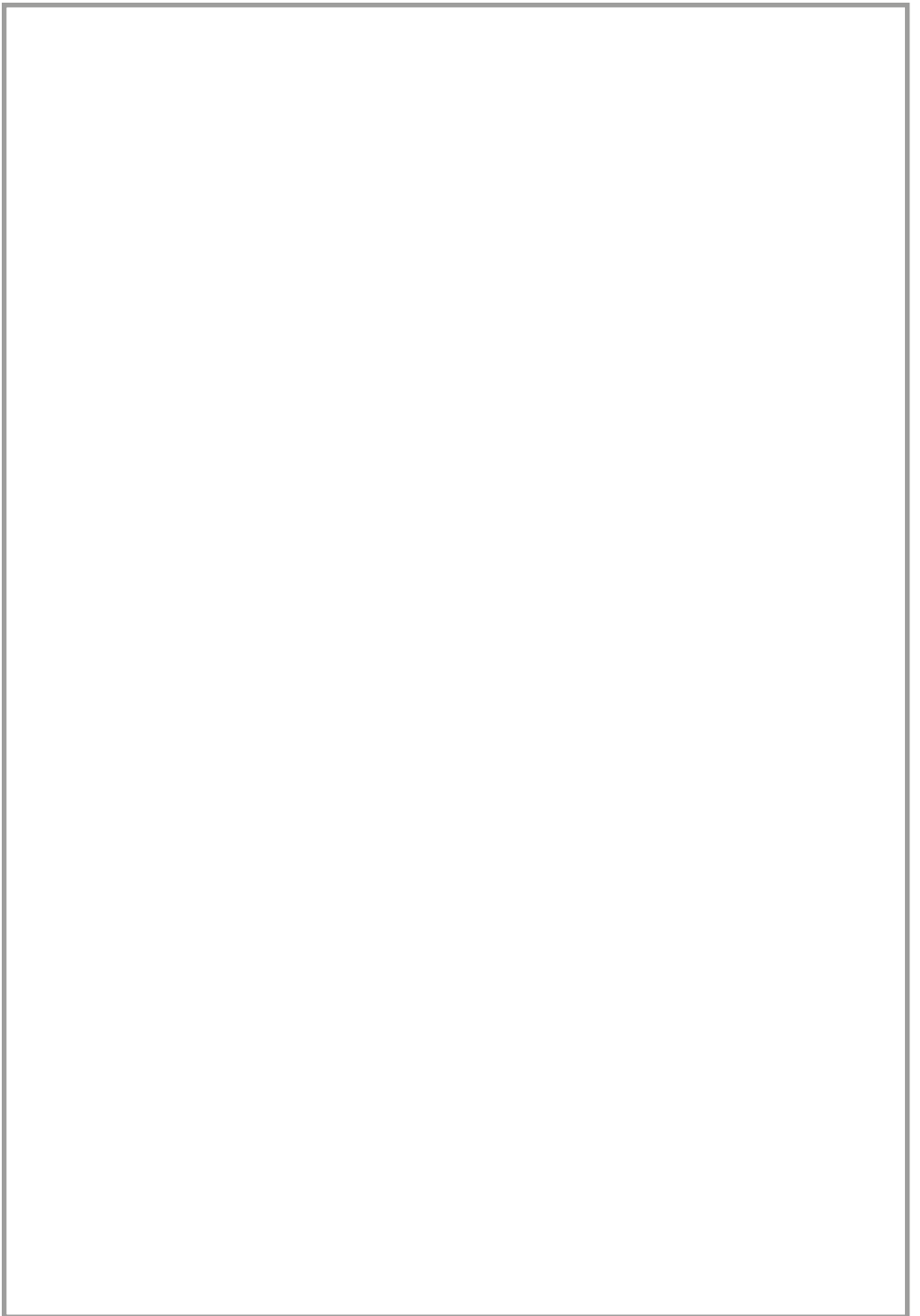
The tubes on the end of a Hurdle or a panel.

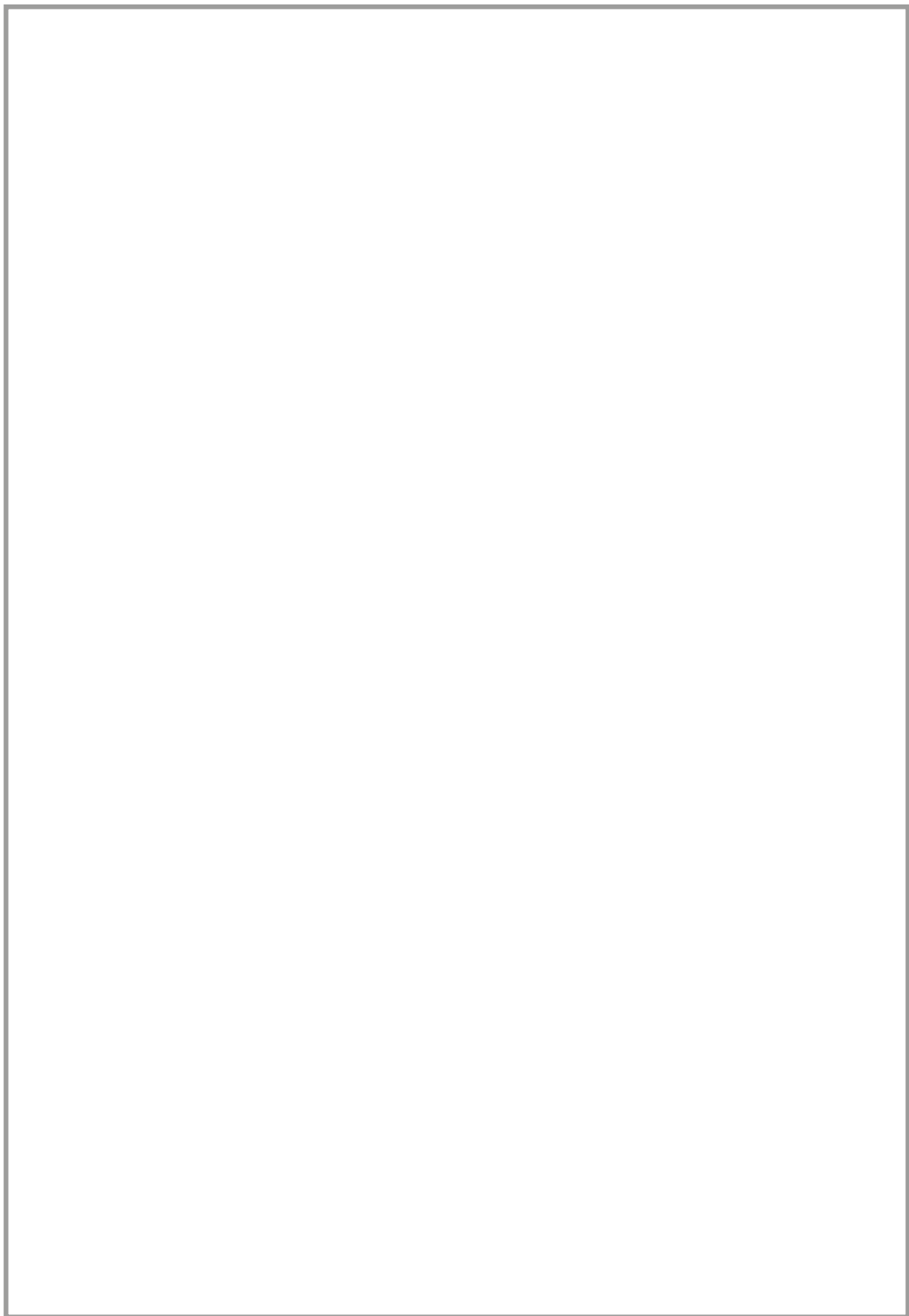


LONG PIN

Used to join Lugs and Couplings. Couplings fit inside of Lugs.









Rappa Fencing Ltd

Steepleton Hill | Stockbridge | Hampshire | SO20 6JE

01264 810665 | sales@rappa.co.uk | www.rappa.co.uk